

Reuse. Reduce. Recycle.

Sustainability Report 2023

Reuse. Reduce. Recycle.

Sustainability Report 2023

Our company

We, Manupackaging Deutschland GmbH (formerly Manuli Stretch Deutschland GmbH), have been producing and selling stretchable films made of LDPE and LLDPE for packaging at our Schkopau location since 1999. Our production cycle constantly consists of 5 shifts with a seven-day week. 12 extrusion lines enable an annual production of end products of at least 80,000 tons. We are mainly active in the German and European markets and produce plastic films as protective or packaging material for various goods. Our company is present in all segments where packaging is used for transportation (mineral water, bricks, wood, building materials, metal processing, pharmaceutical and chemical products, etc.). We produce films for the preservation of animal feed for agriculture.

Originally founded as Manuli Stretch (part of the Manuli Group, 1935 in Milan), we are the inventors of stretch film in Europe and are now one of the world's leading companies in terms of production, sales and quality of products. To underline this claim, we are certified according to ISO.

We manufacture a wide range of 100% recyclable premium products and sell them in 65 countries around the world. These include LLDPE pallet wrap films, stretch hoods and stretch films for agriculture and waste recycling.

Manupackaging Deutschland GmbH is certified according to ISO 9001, ISO 14001 and ISO 50001.



Our sustainability policy

Sustainability is a central part of our corporate strategy. We are aware of our responsibility for our economic, ecological and social action and undertake to make an effective contribution to resource conservation and environmental protection. We also demand the same from our partners along the supply chain.

IN FOCUS

ECONOMICS

- Constant exchange with our customers in order to be able to react to wishes in a targeted manner
- Investment in research and development, especially in terms of sustainable and biodegradable films
- Maintain long-term customer and supplier relationships
- Investment in energy-efficient products, services and interpretation-related activities

ECOLOGY

- Application of an environmental management system according to ISO 14001:2015
- Application of an energy management system according to ISO 50001:2018
- Regular determination and review of the environmental and energetic effects
- Annual ecological accounting
- Constant improvement of our use of resources and the sustainability of our products

Our organization ensures that all necessary information and resources are available to achieve our goals. The integrated management policy we have issued forms the framework for the goals we have set.

We regularly communicate our integrated management policy, particularly with regard to the environmental and energy aspects, to our employees, affiliated companies, suppliers and service providers. Every year we commit to reviewing our management policy and making any necessary corrections.

SOCIAL

- Compliance with internationally recognized human rights along the supply chain
- Rejection of child labor or any kind of exploitation of children along the supply chain
- Rejection of forced labor
- Equal pay for our employees
- Promoting health and occupational safety for a healthy working environment
- Involvement in various social projects
- Training and further education of our employees
- Condemn discrimination and harassment
- Promoting freedom of expression

Economics

On an economic level, for us sustainability primarily means maintaining long-term customer and supplier relationships, efficient production and continuous research and development. Our quality management system according to DIN EN ISO 9001:2015 helps us with this.

SALES VOLUME

77.8
MILLION EUROS

INVESTMENT

0.824
MILLION EUROS

LATEST PROJECT

BUILDING A SUSTAINABILITY NETWORK

In 2023, we increased the establishment of new business relationships with companies from very different sectors to build a sustainability network. Lived sustainability requires interdisciplinary cooperation. In our newly installed M-Forum we carry out tests with our films and thus illustrate our numerous visitors the quality and sustainability of our products.

91% of our customers rate our overall performance as better compared to before. We strive to continuously improve our service. The feedback from our customers is essential for this.

OVERALL PERFORMANCE



91%

Ecology

As a plastic processor, we have a special responsibility in dealing with resources and waste. We are continuously facing this challenge and continuously improving our environmental and energy performance.

We have been certified since 2012 according to DIN EN ISO 14001 and DIN EN 50001.



SUSTAINABLE
PROJECTS

PLASTIC WASTE

100% RECYCLED

All of our production-related plastic waste from stretch film production are recycled internally. So we protect our resources and have the quality of our recyclates under control at all times.

OTHER WASTE

98.7% HARMLESS

Our waste in 2023 was harmless and does not pose an immediate threat to our environment.

82.9% RECYCLABLE

Our waste (not counting those that have already been recycled internally) can be recycled. This includes paper and cardboard, plastic and wood waste.

ZERO LOSS OF GRANULES

Since 2019 we have participated in the “Zero granulate loss” initiative of the IK Industrial Association of Kunststoffe e.V. The aim of this initiative is to protect the oceans from microplastics. To this end, companies participate along the entire supply chain and make their contribution.

MANU-BEE

We want to give something back to nature. For this purpose, we have been producing our own honey on a flower meadow with 15 fruit trees and thus supporting the biodiversity in our environment. 4 bee colonies are entertained by us and hand in their honey.

CREATE LIVING SPACES

In 2023, we invested in properties intended to serve as habitats for flora and fauna, as well as for CO2 storage. For this purpose, we leased a plot of land from the Doyßig-Zeitzer Forst administration community for a period of 10 years and established a meadow with scattered and flowering fruit trees in 2023.

Social

For us, social sustainability primarily means offering employees a job with perspective. Numerous offers and measures to increase employee satisfaction are continuously implemented.

HEALTH PREVENTION

Our employees should feel good in our company for a long time, stay healthy and age. Therefore, we support our staff, in cooperation with the health insurance companies, in individual health care. In this way, for example, we organize health days, skin screenings, pay attention to ergonomic jobs and provide information on current health issues.

There is also a weekly fruit delivery where every employee can use.

The topic of occupational safety is very important to us. We have revised our training concept and will significantly intensify the security training for our managers.

SOCIAL RESPONSIBILITY

Each employer has social responsibility towards its employees. In order to show our stakeholders that we meet this responsibility, we were audited according to SMETA and therefore we are registered on the Sedex platform.

Our ethics code has been an integral part of our corporate policy for years and is currently revised to meet the increasing requirements of recent years.

In 2022 we increasingly focused on more commitment to social projects.

CYCLING TO WORK

In 2022 we also motivated our employees to ride a bike to work. This has several advantages:

- We promote the mental and physical health of our employees,
- we protect the environment with a low-emission type of locomotion,
- we sensitively sensitively our employees for the beauty of nature,
- we combine social activities with the path to work.

For this purpose, our employees support financially in purchasing a new bicycle and take part in the Jobrad initiative.

COLLABORATION WITH HEILPEDAGOGISCHE HILFE E.V.

A special concern for us is to enable the inclusion of people with disabilities. For this purpose, we worked together with the special education aid in Querfurt and manufactured a nozzle cleaning board. In doing so, we have proven that everyone has a place in our society. Due to the positive experience, we are striving for further cooperation.

SPONSORSHIP FOR CLUBES

We have concluded a sponsorship agreement with TSG Wörmnitz-Böllberg e.V. Our support goes to the club's athletes, who we have provided with jerseys.

KEY FIGURES

EMPLOYEES

128

IN GERMANY

The majority of our employees work in 3 shifts in our production.

INITIAL AND CONTINUING EDUCATION

40.000

EURO

Were invested in 2022 for our employees. In doing so, we made an important contribution to the personal development of our employees.

INDIVIDUAL CONTRIBUTION OF OUR EMPLOYEES

All of our employees strive to work in an environmentally friendly way every day. Our office activities are almost paperless, printing is preferably double-sided, waste is consistently separated, and business trips are planned using public transport as often as possible. We prefer communication via video conference in order to effectively protect the environment. Every employee in the company has internalized our sustainability policy and ensures that we use our resources responsibly. We continually receive suggestions from our employees as to how we can further improve our environmental performance.

COLLABORATION WITH HEILPÄDAGOGISCHE HILFE E.V., QUERFURT

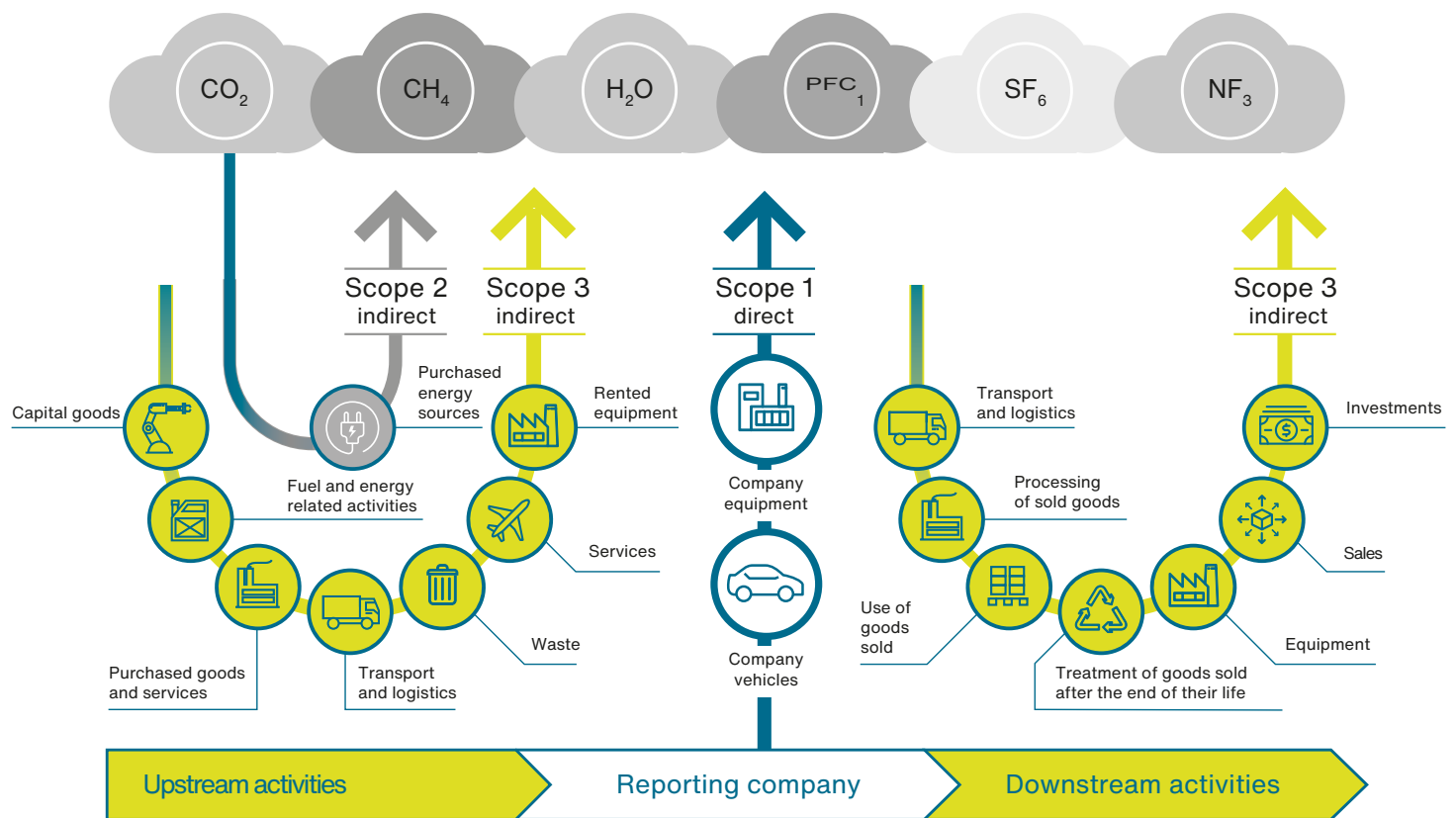
It is particularly important to us to enable the inclusion of people with disabilities. For this purpose, we also collaborated with Heilpädagogische Hilfe in Querfurt in 2023, having them label the honey jars for our ManuBee project. Through this, we demonstrated that everyone has a place in our society. Due to the positive experience, we aim to continue this collaboration in 2024.

SPONSORING FOR CLUBS

We have signed a sponsorship agreement with TSG Wörmnitz-Böllberg e.V. Our support is directed towards the athletes of the club, whom we have equipped with jerseys.

We actively contributed to the implementation of the Panthera Cup 2023 by providing financial resources. With this support, a successful sports event for both young and old could be made possible.

In 2023, we also supported the Swedish national team in walking football by providing the team with financial resources. This collaboration enabled the team to participate in the World Championship and achieve second place in the overall ranking.



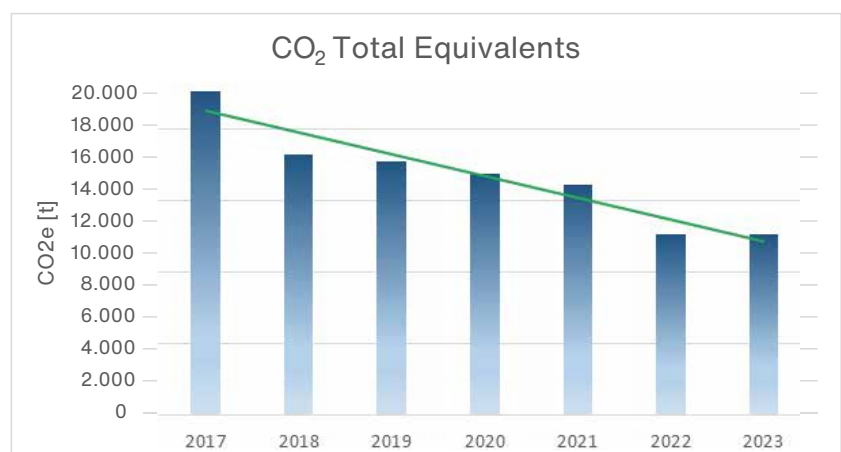
Climate protection – carbon footprint

We have been determining our CO₂ footprint since 2021. According to the GHG Protocol, a distinction is made between:

- Scope 1 – direct emissions (company vehicles, heating)
- Scope 2 – indirect emissions (electricity)
- Scope 3 – indirect emissions from upstream suppliers

We first started with Scopes 1 and 2 to determine the greenhouse gas emissions that are directly caused by our activities at the Schkopau location. In the next step we will take a closer look at Scope 3 along the supply chain.

We have been able to continuously reduce our total emissions in recent years. We continue to strive for this trend.





With Manunature®, we launched three new products in 2020 that are intended to contribute to environmental protection using different approaches.

manunature®RR

The high-quality and high-performance polyethylene stretch film **Manunature® RR** is 100% recyclable. It contains a minimum of 30% post-consumer recycled plastics and, depending on the intended use, up to 60% regenerated material in total.

This is for a true circular economy.

manunature®BD

Manunature® BD is 100% biodegradable and recyclable. The polymers break down into CO₂, water, and biomass through the biodegradation process, without creating microplastics. **Manunature® BD** is 100% usable and recyclable for 6/12 months after production date. Only after that, the decomposition process begins.

manunature®BB

Produced using renewable raw materials, **Manunature® BB** consists of 50/100% BIO-LLDPE, a by-product of the forestry industry and used oils for example. It's simply ingenious: For every kilogram of BIO-LLDPE used in the production of **Manunature® BB**, two kilograms of CO₂ are removed from the atmosphere.

¹Where does the regrind come from?

We are sourcing the post-commercial regrind (PCR) from recyclers certified by EUCertPlast. Manupackaging checks the quality of the PCR granules according to the high requirements of the incoming goods inspection in accordance with ISO 9001:2015 quality management.

²What does biodegradation process mean?

We're talking about biodegradability according to BSI PAS 9017:2020. The PE polymer is transformed into biocompatible wax. Biodegradation occurs in the soil by naturally occurring bacteria and fungi. Ecological impacts are determined through OECD tests.

³What do we mean by CO₂ balance?

For different applications, there are different products that are optimized towards CO₂ balance. If sustainability is important to you, then in addition to product selection, factors such as **circular economy, material consumption, and transportation routes** should also be considered.

PRODUCT		MANUNATURE®RR		MANUNATURE®BD		MANUNATURE®BB	
VARIANT		RR30	RR60	12 Months product life cycle	6 Months product life cycle	50% Bio-LLDPE	100% Bio-LLDPE
FEATURES		30% of raw materials consist of PCR/PIR recycle ¹	60% of raw materials consist of PCR/PIR recycle ¹	Biodegradation process ² starts after 12 months (from delivery date)	Biodegradation process ² starts after 6 months (from delivery date)	Bio-LLDPE is made from waste products, e.g. from the timber industry, or used vegetable oils and is subject to ISCC certification .	
RAW MATERIALS	BIO-BASED (ISCC)					50%	100%
	POST-COMMERCIAL (PCR)	30%	30%				
	POST-INDUSTRIAL (PIR)		30%				
	LLDPE (PETROLEUM/GAS)*	70%	40%	100%	100%	50%	0%
ECOLOGY	CARBON FOOTPRINT ³	🌿		🌿		🌿🌿	🌿🌿🌿
	BIODEGRADABLE			🌿🌿🌿			
	CIRCULAR ECONOMY	🌿🌿🌿		🌿		🌿	
PRICE CATEGORY		€€		€€€€		€€€	€€€€€
AS HAND ROLL			✓	✓	✓		
AS MACHINE ROLL		✓	✓	✓	✓	✓	✓
AS JUMBO		✓	✓				
AS STRETCH HOOD		✓	✓				
PRINTABLE		✓	✓	✓	✓	✓	✓
PRESTRETCH (%)**		150 - 275		175 - 325		250 - 400	
FILM TRANSPARENCY		●●○		●●●		●●●	
OPT. UV PROTECTION		✓				✓	✓
*All LLDPE stretch films and LDPE stretch hoods are 100% recyclable .							

**Does not apply to stretch hoods.

Manupackaging Business Locations



HQ Location

- Milan, Italy



Main Manufacturing Site

- Schkopau-Leipzig, Germany



Manufacturing Sites

- Buenos Aires, Argentina
- Curitiba, Brasil
- Manaus, Brasil



Distribution Locations

Europe

- Schkopau-Leipzig, Germany
- Corsham-Bristol, United Kingdom
- Budapest, Hungary
- Prague, Czech Republic
- Wroclaw, Poland
- Kiev, Ukraine
- Moscow, Russia

Latin America

- Buenos Aires, Argentina
- Curitiba, Brasil
- Manaus, Brasil
- Santiago, Chile

You are welcome to visit our
M-FORUM in Schkopau
<https://www.m-forum.online>

111 FORUM

